

Automatic Round Product Labeling Systems

From the Developers of the **Waterless Cap Sealer**®



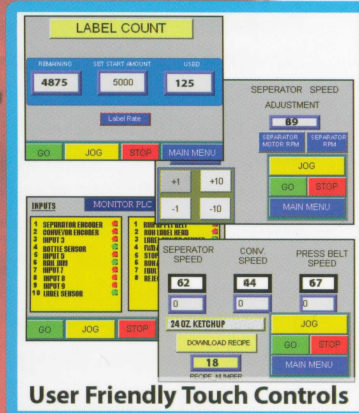
LABEL-VANTAGE™



Model: LW-40



Field Proven Label Applicator



User Friendly Touch Controls



Synchronized Wrap Station

FEATURES:

- Labeling speeds up to 40 meters/minute
- Color TFT touch screen with 180 degree swivel support
- Fast Tool-Less Change-Overs
- European designed field proven label applicator
- Label reel diameter up to 12" / 3" label reel core
- 5 axis applicator head
- Standard 8 foot stainless steel conveyor
- Heavy Duty Patented design one piece uni-frame construction
- Label detector with countdown
- Ethernet Capable
- Menu Driven Microprocessor
- Portable - Compact
- User Friendly
- Handles plastic, metal, fiber and glass containers



AutoMate®

TECHNOLOGIES LLC

Your Partner In Productivity and Automation®

34 Hinda Blvd., Riverhead, NY 11901 USA
Tel (631) 727-8886 • Fax (631) 369-3903
www.AutoMateTech.com

Auto-Mate Technologies LLC, is your ONE SOURCE for High Performance, Reliable and Flexible Packaging and Bottling Machines Including: Bottle Unscrambling, Cleaning, Filling, Capping, Foil Sealing, Conveying, Labeling, Accumulating and Line Integration.



Field Proven Label Applicator



5 Axis Applicator Adjustment

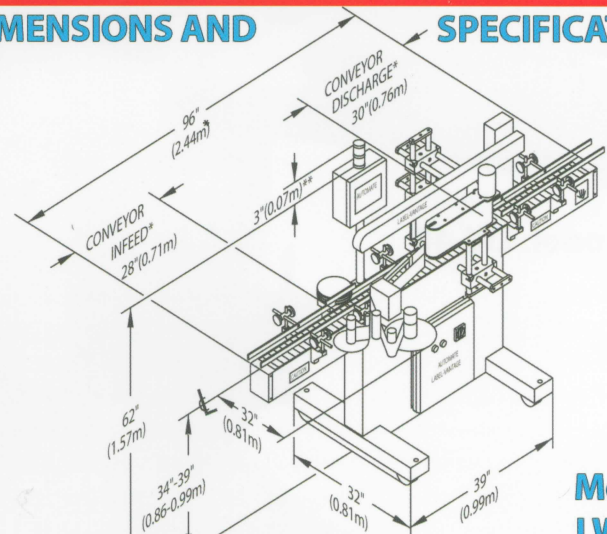
SOME STANDARD LW-40 FEATURES:

- 1. Full and Partial wrap:** Straight in-line automatic labeler for plastic, metal, fiber and glass round containers.
- 2. European designed field proven label applicator:**
 - Variable speed servo drive motor.
 - Standard label reel diameter up to 300mm/12" with 76mm/3" core diameter.
 - Can accept a web width of up to 4.5" - Larger Available.
 - Wrap station 6" x 14" allowing full wrap of most bottles. Others available.
 - Labeling speed: Up to 40 meters per minute /1,500 in. per minute with independently driven reel holder.
 - Proprietary Full 5 axis adjustment of applicator head.
 - Unwind unit gives constant web tension.
- 3. Heavy Duty Design:**
 - One piece welded uni-frame (Patented Design) for 24-hour/7-Day operation.
 - Portable stainless steel compact base frame with stainless steel leveling screws and floor pads.
 - Oversize Stainless Steel Shafting with calibrated settings throughout.
 - 8 foot long stainless steel synchronized variable speed conveyor. (longer lengths and custom layouts available)
- 4. Controls:**
 - Clearly laid out operating display for safe and easy use.
 - Color TFT touch screen control system with rotating 180 degree support.
 - Label countdown with operator alerts (precisely counts the number of labels dispensed by applicator).
 - Photoelectric non-contact label and bottle detectors.
 - Menu driven microprocessor control with over 250 alpha-numeric recipe capacity.
- 5. Additional Features:**
 - Easy integration with popular coders and printers.
 - All variable speed encoder monitored drives.
 - Label count (Both Dispensed and Remaining)
 - Batch count (Both Dispensed and Remaining)
 - Product counter
 - Products per minute rate meter
 - Elapsed hour meter - Ethernet capable
 - Label dispensing speed adjustment.
 - Integrated fully adjustable bottle separator.
 - Custom Applications Available.
 - Double location E-Stops.
 - On screen input/output monitoring.
 - Patented 2 axis tool-less covayor rail adjustments.
 - Numerous standard enhancements.

OPTIONS:

1. Thermal transfer or hot stamp imprinters are easily integrated.
2. Missing label detection with indicator.
3. End of web/broken web detection with automatic shut off and indicator.
4. Larger reel diameters and 6" x 20" wrap station.
5. 208-240 VAC, 1 PH, 50/60 Hz.
6. Stack Indicator Lights (Fault=Yellow, Run=Green, Stop=Red)
7. Audible fault alarms.
8. Independently powered unwinder.
9. Password protected touch screen settings.
10. Complete bottling lines with integration available.
11. Custom Conveyor systems to meet your exact needs.
12. Screens displayed in multiple languages.
13. Numerous custom enhancements tailored for your application.

DIMENSIONS AND SPECIFICATIONS



Model LW-40

Notes:
 1. Height is based on a 34" (0.86m) conveyor height.
 2. Air Consumption: None, unless rejection or special option is added.
 3. Electrics: 110-125V, 1 PH, 50/60 Hz (Standard) or 208-240V, 1 PH, 50/60 Hz. (NEMA 12)
 4. Due to Auto-Mates commitment to maintain quality leadership in the packaging industry, dimensions, specifications and options are subject to change without notice.
 5. Some items shown are optional. Refer to price quote for pricing.
 *CONVEYOR LENGTHS AVAILABLE TO SUIT YOUR NEEDS.
 ** APPROX. 3" PER LIGHT UNIT. UP TO 4 UNITS AVAILABLE.



Your Partner In Productivity and Automation®

34 Hinda Blvd., Riverhead, NY 11901 USA
 Tel (631) 727-8886 • Fax (631) 369-3903
 www.AutoMateTech.com